



**NatSCA**

Natural Sciences Collections Association

<http://www.natsca.org>

## Biology Curators Group Newsletter

---

Title: Obituary - Robert Boyne

Author(s): Coles, A.

Source: Coles, A. (1989). Obituary - Robert Boyne. *Biology Curators Group Newsletter*, Vol 5 No 1, 12.

URL: <http://www.natsca.org/article/878>

---

NatSCA supports open access publication as part of its mission is to promote and support natural science collections. NatSCA uses the Creative Commons Attribution License (CCAL) <http://creativecommons.org/licenses/by/2.5/> for all works we publish. Under CCAL authors retain ownership of the copyright for their article, but authors allow anyone to download, reuse, reprint, modify, distribute, and/or copy articles in NatSCA publications, so long as the original authors and source are cited.

---

Obituary - Robert Boyne

It is with deep regret that we report the death of Bob Boyne, the Museums Officer (Natural Sciences), Tyne and Wear Museums Service at Sunderland Museum, at the early age of 40.

Bob was, primarily, an invertebrate zoologist gaining wide experience on both sides of the Atlantic, including teaching posts at Clemson University, South Carolina and Miami University, Ohio and more recently as temporary assistant at Perth Museum and Art Gallery.

During his time in the U S A Bob specialised in the Ephemeroptera, something that stood him in good stead for his subsequent entomological work at Perth and Sunderland.

Whilst at Sunderland, he devoted much of his time to the entomological collection; in particular the storage and documentation of specimens collected as part of the 1981-1982 Durham County Conservation Trust Survey.

His other great talent was the care and maintenance of live animal displays - something that he developed whilst at Sunderland. The condition of the freshwater and marine aquaria reflected his careful planning and dedication.

Bob was a perfectionist, devoted to his work and collections. He was extremely popular with all his colleagues for his professionalism and sense of humour. He will be sadly missed by friends and colleagues alike at Sunderland and our sympathy goes out to his mother, Marie.

Alec Coles

---

 **AGM 89** 

The 1989 AGM meeting will be held in Dundee Museum on 19th to 21st May inclusive.

The AGM will be on the 19th and the theme for the formal part of the meeting is 'Conservation of Biological Specimens'. There will also be a fieldwork programme and visits to some Scottish museums. The full programme will be in the next Newsletter.

## DUNDEE

---

### REMEMBER

Uses of biological specimens - details to Charles Pettitt at Manchester Museum. Illustrations in a lighter vein to the Editor.

---

---

Beetle-down ..... Campaign

As I write, reports are coming in from all over Britain about successful events associated with 'Beetle-down .....' week and the national campaign. It seems that we have reached a large number of local politicians, museum managements, press and media, not to mention the public at large.

To date 57 starter packs have been sold; 34,000 leaflets distributed, and we are looking for sponsorship to print a further 35,000 for general distribution.

I need:

- \* photocopies of press cuttings
- \* loan/donation of slides/photographs of events
- \* statistics - visitors? radio coverage?

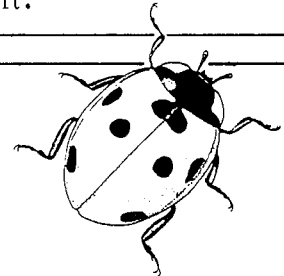
A provisional report will be given in a future Newsletter, and a full report at the Dundee AGM in May 1989. In the meantime, the campaign continues. Please keep up the good work.

Derek Whiteley  
Secretary

PS We have plenty of window stickers, car stickers and T-shirts left.

---

next issue:  
Beetle Down  
reports.



Subscription rates are £6.00 for individual membership and £10.00 for institutional membership. Contact Adam Wright, Herbert Museum, Jordan Well, Coventry, for application forms.

Published by the Biological Curators' Group. The views expressed in the Newsletter do not represent the opinion or policy of the 'Biological Curators' Group committee or membership except where specifically stated.

Edited by John Mathias, Leicestershire Museums Service, 96 New Walk, Leicester LE1 6TD (Tel: 0533 554100 ext.3030) to whom all contributions should be sent. Back numbers are available from the Editor.

Typed by Mrs Judy Marvin, Leicestershire Museums Service. Design consultant Miss Angela Pope, Leicestershire Museums Service. Printed by Leicestershire County Council's Reprographic Unit, County Hall, Glenfield, Leicester.

© The Biology Curators' Group.

ISSN 0144 - 588X